

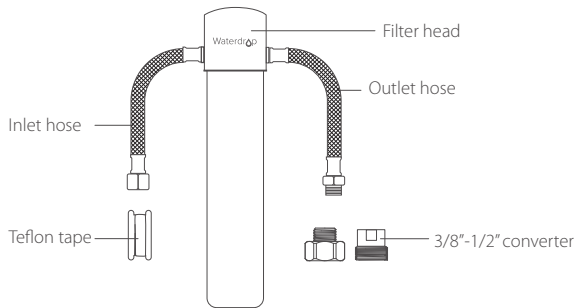


Direct Connect Undersink Water Filtration System

WD-UA system | Installation Instructions



System certified by WQA against NSF/ANSI Standards 42 for the reduction of the claims specified on the Performance Data Sheet, and to NSF/ANSI 372 ($\leq 0.25\%$ lead).



Specifications

Operating temperature	2-38°C/35-100°F
Working pressure	10-100psi (0.7-6.8bar)
Flow rate	0.75gpm (2.83lpm)
Filter capacity	WD-RF10/WD-RF10-UF/MZ/AK: up to 11,000 gallons
	WD-RF15/WD-RF15-UF/MZ/AK: up to 19,000 gallons
	WD-RF17/WD-RF17-UF/MZ/AK: up to 24,000 gallons
Feed water requirement	Municipal tap water

Note:

1. If using well water as the source, please make sure the feed water has been through a pre-filtration system, otherwise, large particles in well water will clog the filter easily and shorten filter life.
2. The above form lists model numbers of only black filters. Please note that the white filter is different from the black filter only in color. They have the same filter material and filtration capacity.
3. Actual filter life varies according to local water quality.

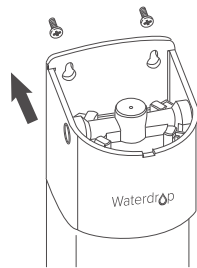
Precautions

- Do not use it with water that's microbiologically unsafe or of unknown quality without adequate disinfection.
- For use only with cold water.
- Do not freeze the filter, as this can cause cracking and water leakage.
- Do not allow children under 3 years old to have access to small parts during installation of this product.
- This installation must comply with all applicable state and local regulations.
- Turn off the water supply while replacing the filter.

Installation of the filter system

Step 1: Fix the filter head and the filter

1. Paste the assistant label to finish drilling. (**Note:** Mount the water filter at least 2 inches higher than the ground for easier filter change.)
2. Install the screw and reserve enough space to hang the filter.
3. Hang the filter system on the screw.



Step 2: Connect the water supply (cold water only)

1. Connect the inlet hose and the outlet hose to the filter head. (Figure 1)

Note: When the hose is tightly inserted, there will be a 1/8 inch gap between the hose and the filter head, which is designed for easy replacement and won't affect the sealing performance.

2. Shut off the water supply. Remove the faucet hose. (Figure 2)

Figure 1

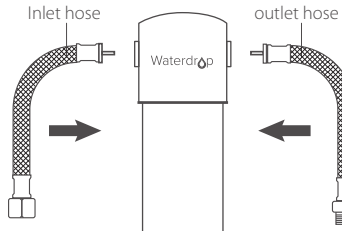
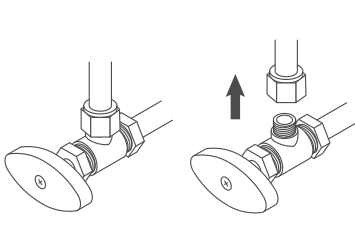


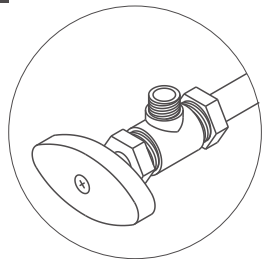
Figure 2



3. Connect the inlet hose to the cold water valve.

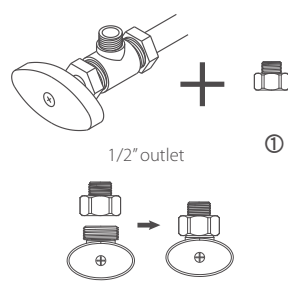
- If the angle valve outlet is 3/8", it can be directly connected to the water supply. (Figure 3)
- If the angle valve outlet is 1/2", connect it with a No.1 converter at first. (Figure 4)

Figure 3



3/8" outlet

Figure 4



Connect ① to the cold angle valve

Step 3: Connect to the faucet

1. If the angle valve outlet is 3/8", it can be directly connected to the water supply. (Figure 5)
2. If the angle valve outlet is 1/2", connect it with a No.2 converter at first. (Figure 6)

Figure 5

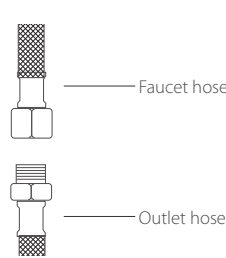
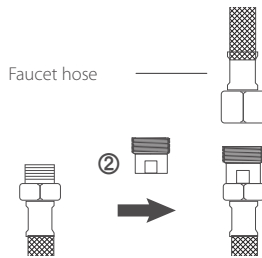


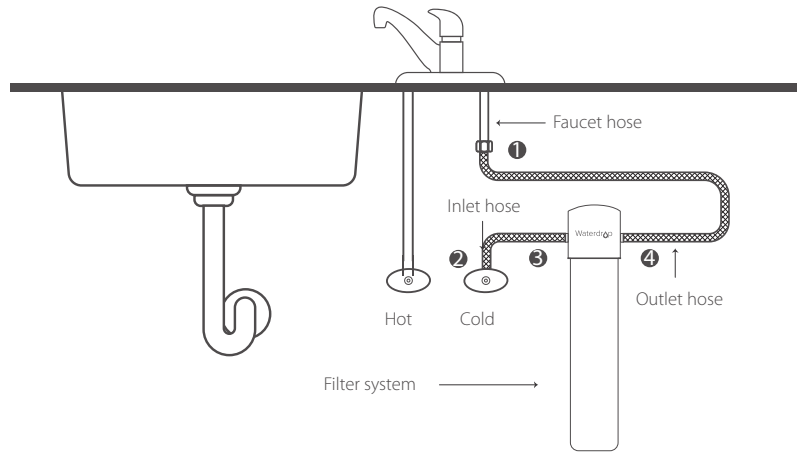
Figure 6



Note: If a female threaded connector is needed, please contact our service team for help.

Check the leaks and flush the filter

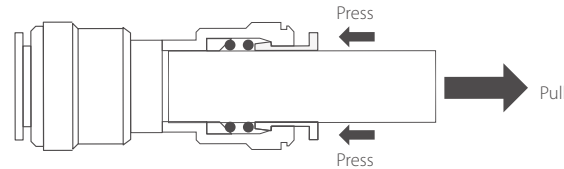
1. If water leakage occurs, turn off the water supply. If the water leakage is occurring at position 1 and 2, wrap Teflon tape on the external thread. If the water leakage is occurring at position 3 or 4, insert the quick-connect fitting to the end and make sure the hoses hit the bottom of the fitting.
2. Flush the filter for 5 minutes before use.



To disconnect

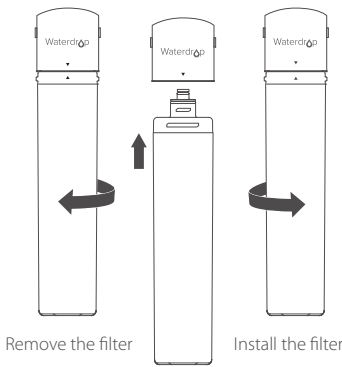
Use your thumb and index finger to press down on the lock sleeve. Use your other hand to pull out the hose from the fitting.

Note: Please do not pull out the tubing directly, or else it will damage the fitting and cause leakage.



Filter replacement

- 1. It’s recommended to turn off the water supply and turn on the faucet to release the water pressure.
- 2. Rotate 1/4 turn to the left to remove the filter.
- 3. Take out the new filter and remove the protective cap.
- 4. Rotate 1/4 turn to the right to install the filter. Ensure that the filter’s triangle mark is aligned with the connection mark.
- 5. Turn on the cold water valve and flush for 5 minutes.



Frequently asked questions

Q: What should I do if water leaks after installation?

A: In the event of water leakage, turn off the water supply. If the water leakage is occurring at the thread, wrap Teflon tape on the external thread. If the water leakage is occurring at the quick connection position, insert the quick-connect fitting to the end and make sure the hoses hit the bottom of the fitting. Contact us for solutions if the water leakage persists.

Q: Why doesn’t the TDS value lower after filtration?

A: The main purpose of this waterdrop filter is not to remove TDS. TDS stands for total dissolved solids, and it is basically composed of inorganic salts and a small amount of organic matter. The filter can remove harmful substances while keeping beneficial trace elements. Please choose Waterdrop RO system if you are looking for physical removal of TDS.

Q: When should I replace the filter?

A: The filter's service life is related to water quality. If the flow rate is significantly reduced or if the water has a peculiar smell, we suggest that you replace the filter. The recommended service life of the filter is as follows: 1 year for WD-RF10, WD-RF10-UF, WD-RF10-MZ and WD-RF10-AK, 2 years for WD-RF15, WD-RF15-UF, WD-RF15-MZ and WD-RF15-AK, 3 years for WD-RF17, WD-RF17-UF, WD-RF17-MZ and WD-RF17-AK.

Q: Why does black water come out during flushing?

A: It’s normal that black water comes out when flushing. The purpose is to remove carbon powder remaining on the surface of filter materials. You can normally use it after flushing for 5 minutes.

1 -year quality assurance

All mechanical devices with moving parts have a normal life span and will need to be replaced periodically. For this reason, mechanical devices such as water fittings, filter head, and faucets have a limited replacement assurance of 1 year. No assurance is given as to the service life of any filter cartridge, as the service life will vary based on local water conditions and water consumption.

If the product proves to be defective within 1 year from the date of purchase, please contact our customer service department. During the assurance period, we will replace or repair any part that is deemed to be defective if the product has not been subjected to tampering, alteration, or improper use after delivery, and has not been repaired by the manufacturer.

We do not make any promises in the event of misuse, use in abnormal temperature conditions, conditions outside those listed in the operating parameters, or use in commercial operations. If you have problems during the purchase or installation process, please contact our customer service.

Performance data sheet

System Model No.:
WD-10UA/WD-10UAW/WD-10UAW/WD-10UAW-UF/WD-15UA/WD-15UA-UF/WD-15UAW/WD-15UAW-UF/WD17UA/WD-17UAW-UF/WD-17UAW


Substance reduction

The system has been tested and certified by WQA according to NSF/ANSI Standard 42 and NSF/ANSI Standards 372. The concentration of the indicated substances in water entering the system was reduced to a concentration less than or equal to the permissible limit for the water leaving the system, as specified by NSF/ANSI Standard 42. While testing was performed under standard laboratory conditions, actual performance may vary.

Performance Data Sheet			
Substance	Inf. Average	Specified Challenge Concentration	Ave. % Reduction
Chlorine Taste and Odor	2.0 mg/L	2.0 mg/L ± 10%	92.7%
Average Product Water		Max Permissible Product Water	Reduction Requirements
0.05mg/L		N/A	≥50%

System to be used with municipal or well water sources treated and tested on regular basis to ensure bacteriological safe quality. Do not use with water that is microbiologically unsafe or of unknown quality without adequate disinfection before or after the system.

Testing was performed under standard laboratory conditions, actual performance may vary.

 **WARNING** Please read it carefully before installation.

The system and installation shall comply with applicable state and local regulations.
Designed by Hongkong Ecoaqua Co., Limited.

Customer service:

- ☎ 1-888-352-3558 Mon-Fri 8:00 AM-5:00 PM (PST)
- ✉ service@water-filter.com
- 🌐 www.waterdropfilter.com (live chat available)

Made in China V003

